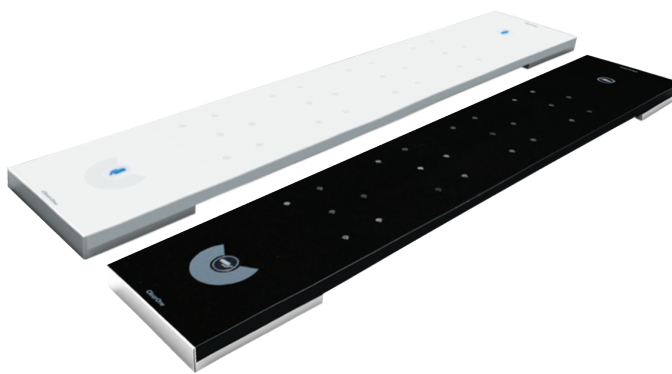


The Beamforming Microphone Array is the Pro-Audio industry's first professional-grade microphone array with beamforming and adaptive steering technology and ClearOne's next-generation Acoustic Echo Cancellation. The ultra-sleek design fits into any conferencing environment and delivers the clearest audio pickup available with adaptive acoustic processing.



### Applications

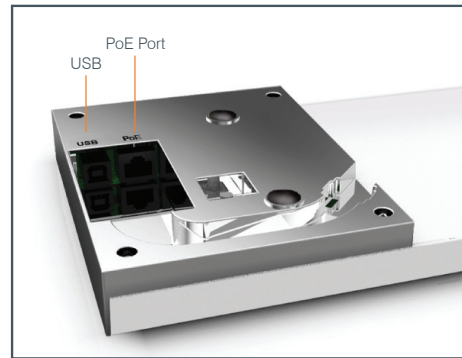
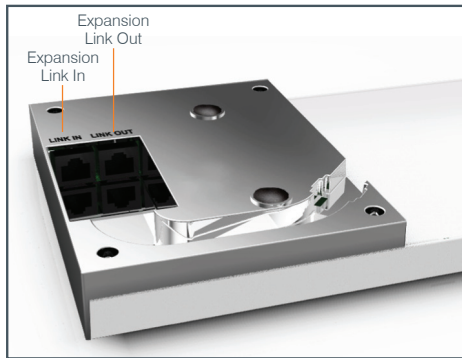
- Board Room
- Conference Room
- Training Center
- Courtroom
- House of Worship
- Telepresence

### Features

- + Beamforming & adaptive steering technology
- + Next-generation Acoustic Echo Cancellation
- + 24 microphone elements
- + Mono and stereo modes for diverse applications
- + Flexible mounting for ceiling, wall and tabletop
- + Works with CONVERGE® Pro products: 880, 840T, 880T, 880TA
- + Expandable for larger room applications by daisy-chaining up to three arrays per CONVERGE® Pro unit
- + Adaptive acoustic processing automatically adjusts to room configuration for best possible audio pickup
- + Replaces up to 10 traditional microphones, with twice the pickup range



## BEAMFORMING MICROPHONE ARRAY CONNECTIONS



## Functional Specifications

### AUDIO

#### ACOUSTIC CHARACTERISTICS:

24 microphones  
 Auto voice tracking  
 Polar Pattern: Custom  
 Frequency Response: 150Hz - 16kHz  
 Signal to Noise Ratio: > 70 dB  
 AEC Tail time: 128 ms  
 Noise Cancellation: 6 - 15 dB adjustable

#### AUTO MIXER PARAMETERS:

Number of Open Microphones (NOM)  
 First mic priority mode  
 Last mic mode  
 Maximum number of mics mode  
 Ambient level  
 Gate threshold adjust  
 Off attenuation adjust  
 Hold time  
 Decay rate

#### MATRIX MIXING PARAMETERS:

1 Channel In  
 18 Expansion Bus In/Out

#### BEAMFORMING MIC ARRAY CONFIGURATION:

Echo cancellation on/off  
 Noise cancellation on/off  
 Filters:  
 All Pass  
 Low Pass  
 High Pass  
 Notch  
 PEQ  
 ALC on/off  
 Gain adjust  
 Mute on/off  
 Auto gate/manual gate

### POWER

PoE IEEE 802.3AF-2003  
 CAT-5 cable or higher  
 6 watts average power consumption

### EXPANSION BUS IN/OUT

Proprietary Network  
 RJ-45 (2)  
 Solid core Category 5e or Category 6 cable, factory terminated, for 200 feet maximum length between any two devices connected through Expansion bus

### USB

Not currently supported. Available for future use

### RS232

Commands through CONVERGE Pro

### CONFIGURATION & ADMINISTRATION SOFTWARE:

CONVERGE Console (4.x)

### WEIGHT

4.4 lbs (2.0kg)

### MECHANICAL

#### DIMENSION (WxHxW)

30" x 1" x 5.75" (WxHxD) (762mm x 25.4mm x 146mm)

### MOUNTING

Ceiling mount kit (12", 24", 36", and 48" suspension column)  
 Wall mount kit  
 Table mount

### ENVIRONMENTAL

#### OPERATING TEMPERATURE

14° F/-10° C to 122° F/50° C ambient temperature

### INSTALLATION

#### OPTIMUM COVERAGE DISTANCE:

About 6 - 10 traditional cardioid mics  
 About 2 - 3 ClearOne ceiling mic array  
 About 8' - 10' radius

### SUPPORTED CONVERGE PRO\*

CONVERGE Pro 840T  
 CONVERGE Pro 880  
 CONVERGE Pro 880T  
 CONVERGE Pro 880TA

\*Maximum 3 Beamforming microphone array per each supported CONVERGE Pro unit and maximum 16 units in one stack

### PART NUMBERS

#### 910-001-003:

White Beamforming Microphone Array

#### 910-001-003-B:

Black Beamforming Microphone Array

#### 910-001-004:

PoE Power Supply & Cables Kit for BFM Array

#### 910-001-005-12:

White Ceiling Mount kit with 12" suspension column

#### 910-001-005-12-B:

Black Ceiling Mount kit with 12" suspension column

#### 910-001-005-24:

White Ceiling Mount kit with 24" suspension column

#### 910-001-005-24-B:

Black Ceiling Mount kit with 24" suspension column

#### 910-001-005-36:

White Ceiling Mount kit with 36" suspension column

#### 910-001-005-48:

White Ceiling Mount kit with 48" suspension column

#### 910-001-006:

White Wall Mount kit for BFM Array

#### 910-001-006-B:

Black Wall Mount kit for BFM Array

## ClearOne Contacts

**North America**  
 Tel: + 801.975.7200  
 Toll Free: +800.945.7730  
 TechSales: +1.800.705.2103  
 Fax: +801.303.5711  
 sales@clearone.com

**Europe & Oceania**  
 Tel: +44.1454.616.977  
 global@clearone.com

**Asia Pacific**  
 Tel: +852.3590.4526  
 global@clearone.com

**Latin America**  
 Tel: +801.974.3621  
 global@clearone.com

**Middle East**  
 Tel: +852.3590.4526  
 global@clearone.com